

Sam Corea's Select Properties

Marketing your home for all it's worth!

ON THE LAKE AT HERITAGE POINT – \$1,350,000



- A truly palatial home, over 6000 sq.ft.
- Including fully developed walkout basement
- French country style with grand ballroom
- Brand new w/with triple garage and bonus room

STRATHCONA, \$849,000 – BACKING RAVINE



- Cidex-built 3600 sq. ft. 2 storey
- Brand new home, choose your colors
- \$100,000 spent in stone work
- Best location in Spring Haven on the ravine

LYNX RIDGE, \$848,000 – ON THE GOLF COURSE



- Brand new 2498 sq. ft. walkout bungalow
- Unobstructed mountain views
- Fully developed walkout, triple garage
- With it's own outdoor sports court

SCENIC ACRES, \$798,000 – MOUNTAIN VIEWS



- Private & exclusive enclave of distinctive NW homes
- Huge pie lot, over \$75,000 spent in landscaping
- Almost 6000 sq. ft. developed, triple garage
- Fully developed walkout basement, media room
- Unobstructed mountain, COP & city views

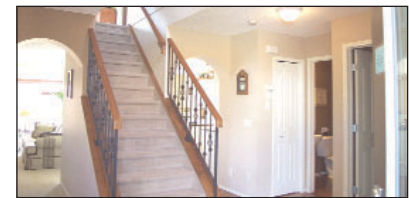
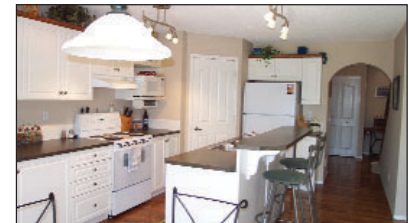
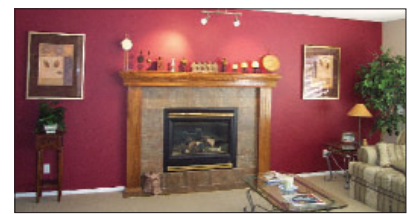
Springbank Hill – \$269,900



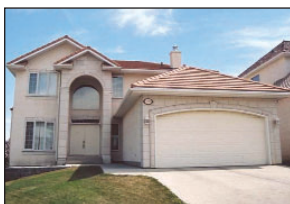
Just Listed

Like-new Jayman-built 2 storey complete with developed basement, 3 bedrooms and den. Features extensive hardwood and tile floors, upgraded carpet and underlay, open stairway with iron spindles, formal dining room, great room with fireplace and large window with wooden blinds, gourmet kitchen with white cabinetry, central island and eating bar, walk-in pantry, separate telephone desk, all appliances included. Sunny south backyard, fully fenced and landscaped, covered front verandah. Basement developed with huge family room with built-in cabinets and bar fridge. Includes alarm system, built-in vacuum system, all window coverings and appliances.

Call Sam Corea direct at 870-8811.
No disappointments here.



PATTERSON, \$549,900 WALKOUT & VIEWS



- Super location backing onto ravine
- Lot over 10,000 sq. ft.
- Beautiful river valley & city views
- 4 bedrooms & main floor den, walkout bsmt.

THE SLOPES, \$749,000 UNOBSTRUCTED VIEWS



- Just listed, West Coast style bungalow
- With loft, developed walkout basement
- Over 4300 sq.ft. contemporary design
- Granite counters, triple garage

Sold 4015 CRESTVIEW ROAD S.W. \$1.79 MILLION



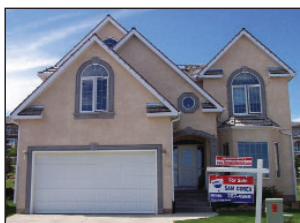
- Sold in 37 days**
- Backing river park & ravine
 - Exceptional views, all levels
 - Exclusive location

ELBOW VALLEY, \$599,000 HOME GYM & INDOOR POOL



- Exclusive Elbow Valley Estates location
- 2879 sq. ft. plus fully developed basement
- Separate bonus room ideal as home gym
- Indoor lap pool and hot tub developed down

SIGNATURE PARKE, \$415,000 BACKING GREENBELT



- Over 2700 sq.ft., + fully developed basement
- 5 + 1 bedrooms, master w/ huge walk-in closet
- Pie lot, west backyard, quiet cul-de-sac

QUARTER SECTION \$1,500,000

A rare find, 160 acres of pristine ranchland, with stunning views of the mountains. Several excellent building sites. Subdivision potential for four 40-acre parcels, an excellent opportunity for the investor. Head west on 1A to Jamieson Rd. go left at fork, kitty corner to AR Ranches.



RE/MAX[®]
house of real estate Agent

Call Sam Corea at (403) 870-8811
View interior photos at: www.samluxuryhomes.com