

Sam Corea's Select Properties

Westhills, Springbank, Inner City, Elbow Valley, Mount Royal . . .

Ultimate Exposure

Marketing your luxury home for all it's worth!

e-mail: sam@4homesincalgary.com

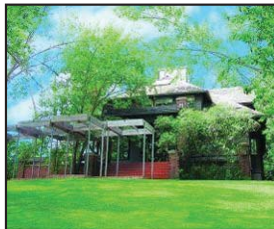


Call Sam Corea
(403)-870-8811

Mount Royal – \$1,175,000

Private 1/3 acre lot Listed May 4, 2002

One of the finest examples of contemporary architecture in Calgary. Designed by one of Calgary's top architects for an owner who loves to entertain. This beautifully treed 75' x 176' lot with west exposure is a private oasis in the heart of the city. The home offers over 3600 sq.ft. of grand living space, plus fully developed lower level. A sunroom opens to a huge wrap around veranda and two of the bedrooms have private decks. There are 6 upper bedrooms including a secluded master suite on the top floor with skylights and full height windows overlooking the backyard and the views of the city.



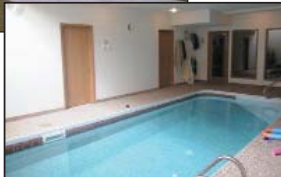
ELBOW VALLEY, \$950,000

- Large lot in cul-de-sac location backing onto the golf course
- Over 4,300 sq. ft. of luxurious living space with developed walkout bsmt.
- Ultra high end finishings including 12" baseboards, cherry floors, maple cabinets, granite countertops
- Main floor master suite, 6 bedrooms
- Professionally developed media room



BACKING GOLF COURSE

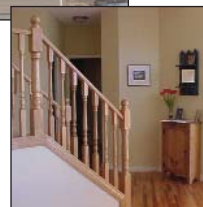
ELBOW VALLEY \$599,900



- Private bonus room with separate entry
- Adjoining two upper bedrooms and bath
- Private main floor master bedroom suite
- Developed basement with pool and hot tub

SEPARATE TEEN RETREAT

SIENNA PARK \$319,900



- Huge pie lot with mountain views
- Hardwood floors, oak kitchen w/ island bar
- Cul-de-sac – walk to school and ice rink
- Landscaped yard with sprinkler system

WALKOUT BASEMENT

SIENNA ESTATES, \$539,900



- Spacious bungalow with fully developed walkout.
- Exquisitely finished: birds' eye maple, imported tiles, marble, granite, hardwood floors, detailed built-ins.
- Old world craftsmanship to be seen in this home!

WALKOUT BUNGALOW

ERLTON, \$319,900



- Next to Lindsay Park, river and bike paths
- 1,700 sq. ft, 2 large decks - city views
- Granite counters, maple cabinets
- Fireplace, 2 ensuite baths, double garage

SPARKLING CITY LIGHTS

LYNX RIDGE, \$1,390,000



- 8,000 sq. ft. bungalow on 1/2 acre
- wonderful mountain views
- fully developed walkout basement
- 1,000 sq. ft. nanny suite
- 6 bedrooms and 7 bathrooms
- truly one of Calgary's finest homes!

LUXURIOUS NEW HOME

DISCOVERY RIDGE, \$599,900

- Brand new two storey plus developed walkout
- Backs onto huge treed park and river
- Two big decks and master retreat with views
- Minutes to downtown and Westhills



BACKING ONTO RIVER

• Find out what homes in your neighbourhood are selling for.

• Free, quick, over-the-phone home evaluation.

• Timing – when is the best time to sell?

RE/MAX
house of real estate Agent