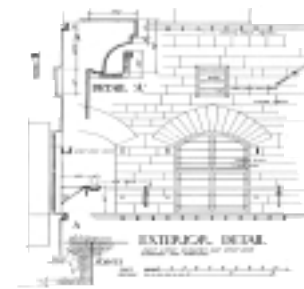


Ultimate Exposure

Marketing your home for all it's worth!



Sam Corea
870-8811

e-mail: sam@homesinwesthills.com

Online Home Evaluations

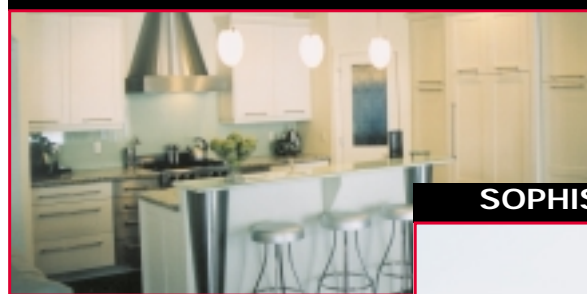
**CALL SAM
AND COMPARE THE DIFFERENCE!**

- Find out what homes in your neighbourhood are selling for.
- Free, quick over-the-phone home evaluation.
- Timing – when is the best time to sell?
- How to sell your home for up to \$4,000 more

Specializing on The Westhills
with 10 years experience

RE/MAX house of real estate
Agent

REINVENTING THE "BURBS"



DISCOVERY RIDGE

From the pages of "Metropolitan Home" Magazine! This sleek 3,400 sq. ft. bungalow features hand engraved concrete floors with in-floor heating, glass back-splash, stone mosaic tiles, barrel vaulted ceilings, chrome & stainless steel accents, granite counter-tops and concrete sinks all in a relaxed contemporary design. This home includes three bedrooms, media room, butler's pantry, main floor den, and separate entrance for fully developed lower level, ideal for home office. If you appreciate modern design and ultra high end finishings, this custom built home, by Parkhaven Homes is for you.

DISCOVERY RIDGE LUXURY!!

SOPHISTICATED NEW HOME



\$489,900

LYNX RIDGE, \$1,390,000



LUXURIOUS NEW HOME

- 8,000 sq. ft. bungalow on 1/2 acre with wonderful mountain views & fully developed walkout basement with 1,000 sq. ft. nanny suite

THE SUMMIT, \$549,900



EXCLUSIVE LISTING

- 3,500 sq. ft. bungalow, fully developed walkout
- South exposure with awesome mountain views.
- Open plan / quiet location, minutes to shopping, downtown and golf. **SOLD at 99.6% of list price.**

ERLTON, \$319,900



SPARKLING CITY LIGHTS

- Next to Lindsay Park, river and bike paths
- 1,700 sq. ft., 2 large decks - city views
- Granite counters, maple cabinets
- Fireplace, two ensuite baths, double garage

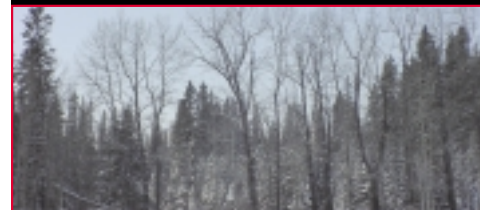
PROMINENCE, \$189,900



WALKOUT BASEMENT

- Two storey townhouse backs onto greenbelt.
- Unobstructed city views, sunken living room with atrium.
- Double master bedrooms with ensuites and walk-ins.
- Available immediately!

NEW HOME, \$599,900



BACKING ON THE RIVER

- Brand new 2,300 sq.ft. + developed walkout
- Backs onto treed park and river
- Great room, hardwood floors
- Minutes to downtown and Westhills

SIENNA PARK \$319,900



HUGE PIE LOT

- Almost 1/4 acre / mountain views
- Hardwood floors, oak kitchen w/ island bar
- Cul-de-sac - walk to school and ice rink
- Landscaped yard with sprinkler system

ELBOW VALLEY, \$759,900



VIEW OF THE LAKE

- 2,250 sq. ft. bungalow, on 1/4 acre, west exposure
- Triple garage, fully finished basement, in-floor heating
- Great room / family & media rooms, tons of upgrades
- Polished limestone flooring and granite countertops

SIENNA ESTATES, \$539,900



WALKOUT BUNGALOW

- Spacious bungalow with fully developed walkout.
- Exquisitely finished: birds' eye maple, imported tiles, marble, granite, hardwood floors, detailed built-ins.
- Old world craftsmanship to be seen in this home!

STRATHCONA, \$284,900



STYLISH & CONTEMPORARY

- Contemporary 4 bedroom home
- Maple hardwood & cabinetry
- Granite countertop & high ceilings
- Huge 145' deep lot on cul-de-sac

STRATHCONA \$264,900



BEAUTIFUL BUNGALOW

- Bright & open plan bungalow
- With vaulted ceilings & skylights
- Maple kitchen with granite countertops
- Master bedroom with garden doors

SPRINGBANK, \$699,900



LOFT AND WALKOUT BASEMENT

- Custom built 5 bedroom bungalow
- With loft & developed walkout basement
- Triple attached garage and exceptional landscaping & mountain views.

SPRINGBANK, \$549,000



PANORAMIC VIEWS

- 2,700 sq. ft two storey with walkout basement
- Mountain views from all three levels.
- Huge country kitchen, maple floors, granite countertops, iron railings, triple car garage.

RENTERS

Stop Paying Your Landlord's Mortgage & Learn How to Own Your Own Home
Free Report reveals how easy it is to get into the housing market today

To request a report call 287-4966.



FREE QUICK OVER THE PHONE
Home Evaluation call us now at 287-4966