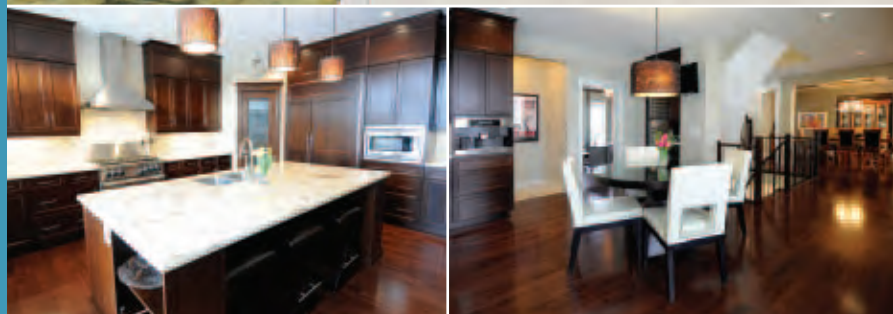


# 15

## WESTPARK PLACE, SW



WENTWORTH | \$1,695,000

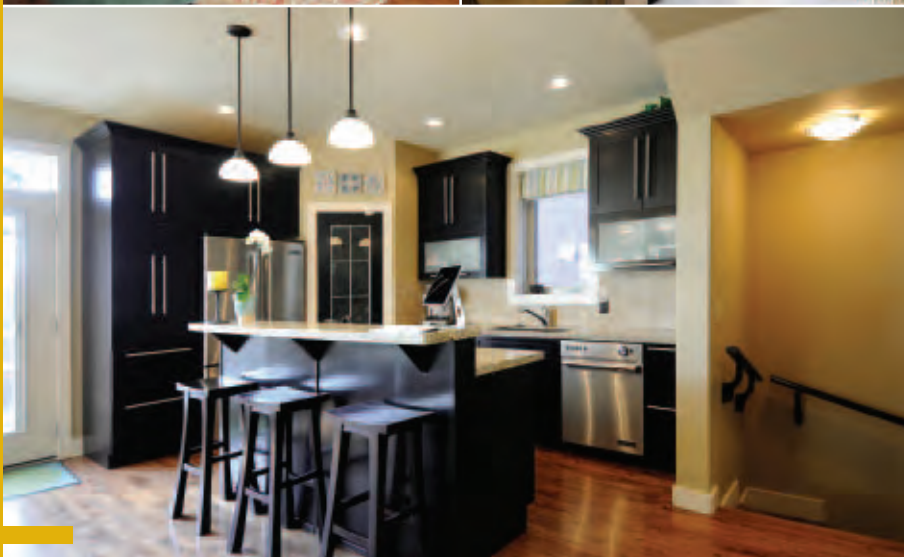
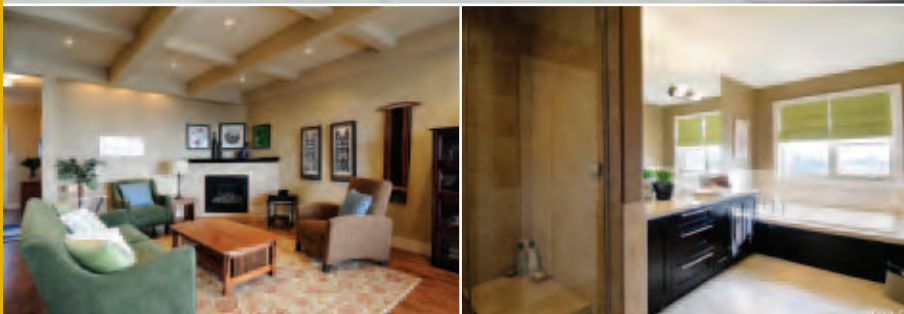
- Backing south onto pond
- 3365 SF, 4 bedrooms total
- Developed walkout basement
- Beautifully landscaped yard
- Exclusive enclave of homes
- Triple garage

<http://samcorea.ca/properties/15WestparkPlace/>

WEST HILLS

# 3928

## 16A STREET, SW



ALTADORE/RIVER PARK | \$799,000

- Steps to River Park and Playgrounds
- 1869 SF + developed walkout
- Walkout with cork floor & wet bar
- Granite counters & site-finished hardwood
- Coffered ceiling in great room
- Deck with gas & water outlets

<http://samcorea.ca/properties/392816AStreet/>

INNER CITY

# 16

## GRANITE RIDGE



STONEPINE | \$3,495,000

- Mission Homes masterpiece
- 2658 SF bungalow + walkout
- Over 5000 SF of luxury
- The ultimate in high-end finishes
- Courtyard with fireplace
- Exclusive gated community

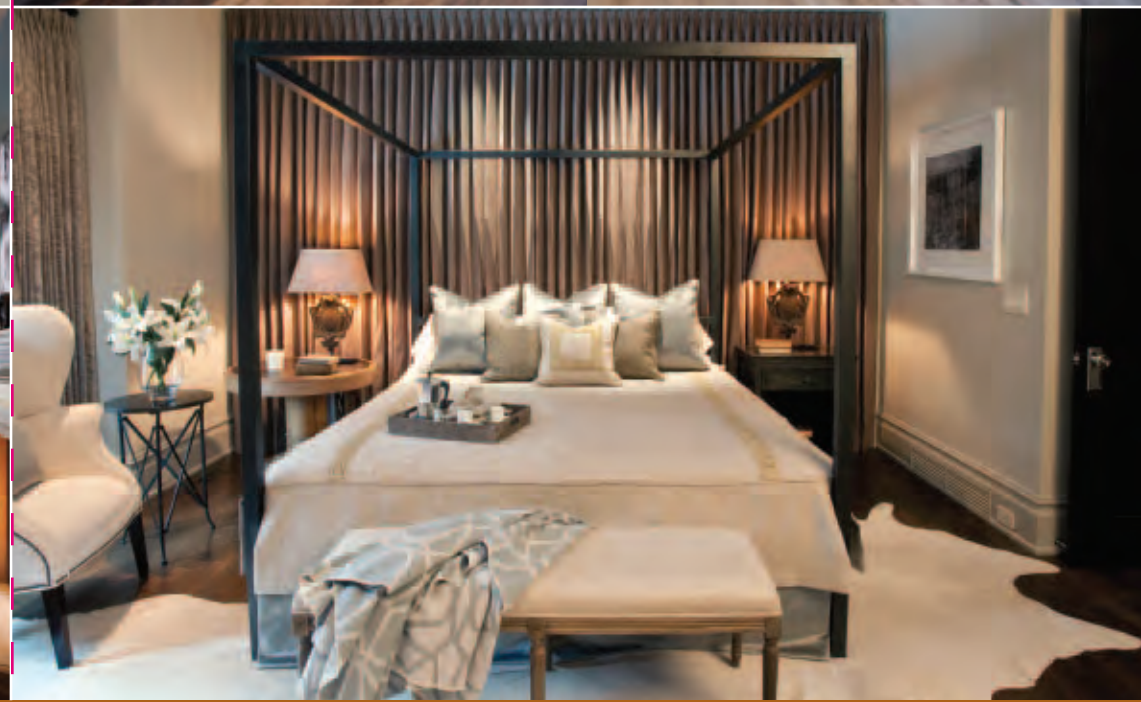
<http://samcorea.ca/properties/16GraniteRidge/>

COUNTRY HOMES



MISSION HOMES

403 870 8811 | [www.SamCorea.ca](http://www.SamCorea.ca)



#1 IN CANADA!  
#2 WORLDWIDE!  
RE/MAX 2010

samcorea RE/MAX HOUSE OF REAL ESTATE  
SHOWCASING CALGARY'S GREAT MOVES

# SAM

JUNE, 2011

WHAT WILL BE YOUR NEXT MOVE?



samcorea

SHOWCASING CALGARY'S GREAT MOVES

RE/MAX HOUSE OF REAL ESTATE

# COUNTRY

BEARSPAW | \$880,000



**97** HILL SPRING MEADOWS

- Updated, contemporary acreage
- 2168 SF bungalow with 3 + 1 bedrooms
- 3500 SF of development
- 4 acres, ideal for 2 horses
- Triple garage, amazing views
- 15 minutes to Crowfoot Centre

<http://samcorea.ca/properties/97HillSpringMeadows/>

ELBOW VALLEY ESTATES | \$1,050,000



**36** CROOKED POND GREEN

- 1926 SF bungalow
- Developed walkout basement
- 3330 SF of development
- 1 + 2 bedrooms & den
- Steps to golf course & ponds
- Dramatic, upgraded home

<http://samcorea.ca/properties/36CrookedPondGreen/>

ELBOW VALLEY ESTATES | \$1,350,000



**315** SNOWBERRY PLACE

- 3300 SF + developed basement
- Grand country home
- Refinished Brazilian cherry hardwood floors
- Backing onto linear greenspace
- Luxurious walk-in with custom built-ins
- Car lovers' 4 car garage with built-in cabinetry

<http://samcorea.ca/properties/315SnowberryPlace/>

PINEBROOK ESTATES | \$1,195,000



**39** PINECONE LANE

- 3500+ SF on 2 acres
- 4 bedroom bungalow with loft
- Desirable golf course community
- Minutes to shopping & services
- Updated gourmet kitchen
- 2-storey travertine clad fireplace

<http://samcorea.ca/properties/39PineconeLane/>

# WEST HILLS

ASPEN ESTATES | \$1,095,000



**311** ASPEN MEADOWS HILL, SW

- Stylish "Manhattan" Loft
- Walkout basement
- Live like a rock star!
- 3100 SF with private elevator
- Wolf® & Sub-Zero® appliances
- Ultimate in high-end finishes

<http://samcorea.ca/properties/311AspenMeadowsHill/>

ASPEN ESTATES | \$1,350,000

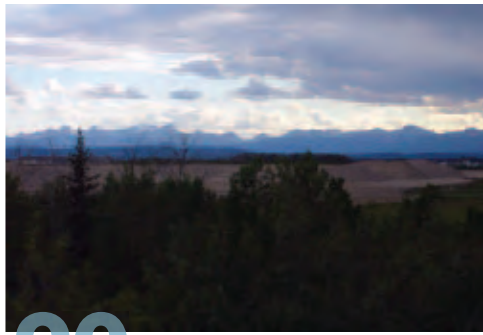


**11** ASPEN RIDGE LANE, SW

- Very exclusive address
- 5400 SF of living space
- Wine cellar with iron gates
- Main floor master suite
- Total of 7 bedrooms
- Triple attached garage

<http://samcorea.ca/properties/11AspenRidgeLane/>

ASPEN ESTATES | \$1,795,000



**90** ASPEN RIDGE WAY, SW

- Majestic 270' mountain views
- \$170,000 in recent renovations
- 13,000+ SF pie lot, on the ridge
- Beautiful high-end finishings
- 2+2 bedrooms / 6 baths
- Oversized triple garage

<http://samcorea.ca/properties/90AspenRidgeWay/>

DISCOVERY RIDGE | \$1,095,000



**83** DISCOVERY RIDGE BLVD, SW

- Backing tree green space
- 2900 SF + developed basement
- Beautiful master with retreat
- Extensive rich built-ins
- Natural stone & rich woodwork

<http://samcorea.ca/properties/83DiscoveryRidgeBoulevard/>

DISCOVERY RIDGE | \$849,000



**329** DISCOVERY RIDGE BLVD, SW

- 2-storey / 3 bedroom home
- Siding & backing greenspace water feature
- 2618 SF + 948 SF downstairs
- 5 bedrooms all with walk-in closets
- Formal dining room, butler's pantry
- Walnut hardwood throughout main floor

<http://samcorea.ca/properties/329DiscoveryRidgeBoulevard/>

# INNER CITY

ALTADORE/RIVER PARK | \$1,265,000



**3809** 15A STREET, SW

- Contemporary architectural home
- Desirable street, near River Park
- 2336 SF with 3 bedrooms & den
- High-end designer finishings
- Rich woodwork & granite
- West backyard with teak deck

<http://samcorea.ca/properties/380915AStreet/>

ALTADORE/RIVER PARK | \$695,000



**5012** 20TH STREET, SW

- Stylish, detached home
- 1711 SF + developed basement
- Close to River Park and golf
- 3 + 1 bedrooms, 4 baths
- Grand curved staircase
- Extra deep 138-ft lot, south backyard

<http://samcorea.ca/properties/501220Street/>

ALTADORE/RIVER PARK | \$1,375,000



**2037** 49TH AVENUE, SW

- Luxurious, high-end "Mission Home"
- Wolf® & Sub-Zero® appliances
- Calcutta Gold® marble & CaesarStone® counters thru-out
- 3200+ SF with 3 + 1 bedrooms
- Great location, 138-ft lot, south backyard

<http://samcorea.ca/properties/203749Avenue/>

PATTERSON/PROMINENCE | \$925,000



**55** PATRICK VIEW, SW

- 2900 SF 2-storey, 4300+ SF of living space
- Developed walkout basement
- 4 bedrooms / 4 baths
- City views from all 3 levels
- Wine cellar & sauna
- Triple attached garage

<http://samcorea.ca/properties/55PatrickView/>

PATTERSON/PROMINENCE | \$525,000

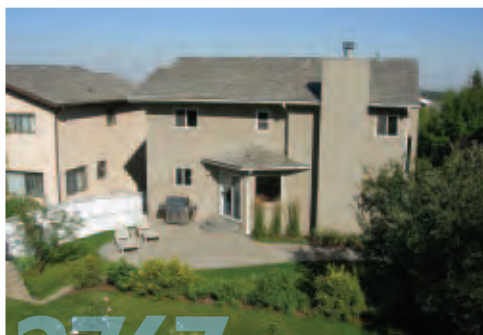


**197** PATTERSON HILL, SW

- Large 3 bedroom bungalow
- 1708 SF + 921 SF downstairs
- 2 bedrooms & bath down
- Oak hardwood floors
- Formal dining room
- Patio & fireplace in fenced yard

<http://samcorea.ca/properties/197PattersonHill/>

SIGNAL HILL | \$599,000



**2767** SIGNAL HILL DRIVE, SW

- 2070 SF 2-Storey
- Fully developed basement
- 3 bedrooms / 3 baths
- Huge lot, sunny west exposure
- Enjoy the city view
- Near transit & shopping

<http://samcorea.ca/properties/2767SignalHillDrive/>

SPRINGBANK HILL | \$1,995,000



**35** ELMONT DRIVE, SW

- 5400 SF of living space
- Amazing views
- Stone exterior
- Beautiful high-end finishes throughout
- Triple garage
- 82-ft x 168-ft lot

<http://samcorea.ca/properties/35ElmontDrive/>

STRATHCONA | \$625,000



**1350** STRATHCONA DRIVE, SW

- Steps to ravine & walking paths
- Walk to shopping & restaurants
- 2263 SF, with 3 bedrooms
- Sunny southwest backyard
- Maple kitchen, granite counters
- Breakfast nook with fireplace

<http://samcorea.ca/properties/1350StrathconaDrive/>

BELTLINE | \$359,000

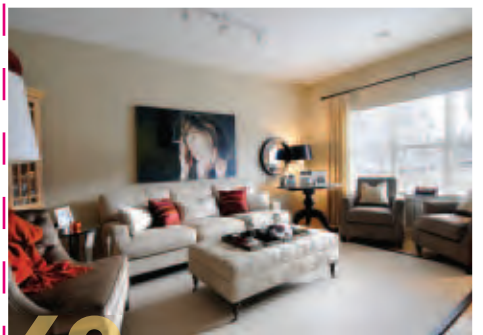


**508** 114 15 AVENUE, SW

- 2 bedrooms & 2 full bathrooms
- Trendy area near Hotel Arts
- Walk to new Sunterra grocery
- Huge balcony with city view
- Gas fireplace, in suite laundry
- Titled underground parking

<http://samcorea.ca/properties/50811415THAvenue/>

GARRISON WOODS | \$759,000



**69** SOMME BLVD, SW

- Much sought after location
- Quiet location overlooking greenspace
- Over 2800 SF of living space
- 3 bedrooms & den
- Granite counters in kitchen & bathrooms
- Gym & media room downstairs

<http://samcorea.ca/properties/69SommeBoulevard/>

GLENBROOK | \$599,000



**4516** 30TH AVENUE, SW

- Fully renovated split level
- Total of 4 bedrooms
- Huge cedar deck
- Open concept plan
- Oversized detached garage
- Large, private 130-ft deep lot

<http://samcorea.ca/properties/451630THAvenue/>

WENTWORTH | \$995,000

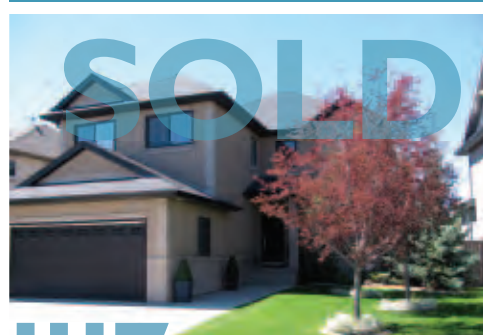


**8627** WENTWORTH DRIVE, SW

- Listed and sold to my buyer at 98% of the list price

<http://samcorea.ca/properties/8627WentworthDrive/>

WENTWORTH | \$975,000



**1117** WENTWORTH VIEW, SW

- Listed and sold to my buyer at 97% of the list price

<http://samcorea.ca/properties/1117WentworthView/>

WENTWORTH | \$699,000



**43** WENTWORTH HEIGHTS, SW

- Bungalow backing onto ravine
- Large pie lot, on cul-de-sac
- Spectacular landscaping
- Developed walkout basement
- Ideal empty-nester home
- 1+2 bedrooms & main floor den

<http://samcorea.ca/properties/43WentworthHeights/>

WENTWORTH | \$1,795,000



**19** WEST PARK PLACE, SW

- Backs onto water feature
- Developed walkout basement
- Professionally landscaped
- Private enclave of West Park
- Media room & wet bar
- Oversized heated triple garage

<http://samcorea.ca/properties/19WestParkPlace/>

SPRINGBANK | \$2,795,000



**53** UPLANDS RIDGE

- 2 acres, minutes to downtown
- Unobstructed mountain views
- 6800 SF of luxurious living
- 6 car attached garage
- "Smart Home" technology
- The ultimate wine cellar

<http://samcorea.ca/properties/53UplandsRidge/>

SPRINGBANK | \$1,150,000



**15** WESTBLUFF PLACE

- Listed and sold with competing offers

<http://samcorea.ca/properties/15WestbluffPlace/>



**samcorea** RE/MAX  
HOUSE OF REAL ESTATE

SHOWCASING CALGARY'S GREAT MOVES

**Luxury at every price point:** While Sam is best known for million dollar sales, he doesn't work exclusively in that price range. Sam believes that luxury is a feeling that comes with a certain quality of service and level of professionalism. This philosophy has allowed Sam to gain clients for life. No matter where you are on the property ladder, Sam will make your next move a great one.



403 870 8811 | [www.SamCorea.ca](http://www.SamCorea.ca)

RIDEAU PARK | \$259,000



**107** 3337 RIDEAU PLACE, SW

- Breathtaking mountain views
- On the ridge, overlooking the river
- Fully-updated interior finishes
- Modern kitchen with stainless appliances
- Tranquil, exclusive inner city location
- Walk to downtown & 4th Street

<http://samcorea.ca/properties/1073337RideauPlace/>

SOUTH CALGARY | \$695,000



**2020** 28TH AVENUE, SW

- Renovated detached home
- Concrete counters, hardwood floors
- 1756 SF + developed basement
- 3 bedrooms, 2 stone fireplaces
- Perched on a hill with city views
- Master bedroom with private balcony

<http://samcorea.ca/properties/202028Avenue/>