

Sam Corea's Select Properties

Ultimate Exposure

Marketing your home for all it's worth!

View interior photos at

www.samsluxuryhomes.com



Call Sam Corea
(403)-870-8811

PATTERSON, \$289,900
STUNNING VIEWS



- Like new, totally upgraded townhouse
- Backing onto ravine and bike pathway
- Breathtaking downtown and city views
- Maple kitchen w/ stainless steel appliances

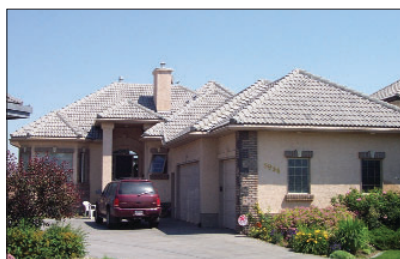
PATTERSON, \$389,900
WALKOUT BASEMENT



Just listed

- 3375 sq. ft. 2 storey + developed walkout
- Many recent upgrades and improvements
- Hardwood flooring on main & upper floors
- Large, beautifully landscaped lot, views

SIGNAL RIDGE, \$539,900
HUGE PIE LOT, VIEWS



- Just listed July 23, be first to see it
- 1/4-acre lot with super city views
- 2100 sq. ft. Fancy Shacks bungalow
- Triple garage & developed basement

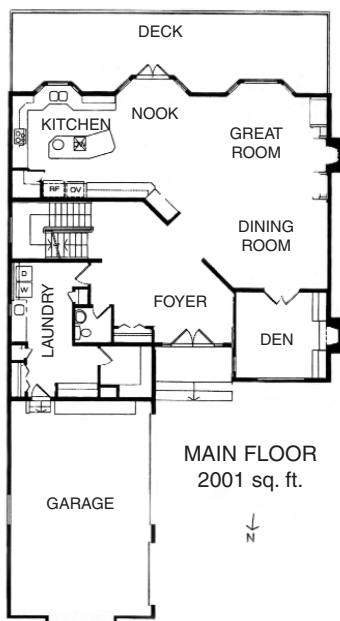
DISCOVERY RIDGE, \$550,000
BACKING NATURAL GREENBELT



- Contemporary, totally upgraded new home
- Excellent location backing south on greenbelt
- Fully developed walkout
- Hardwood floors and granite countertops

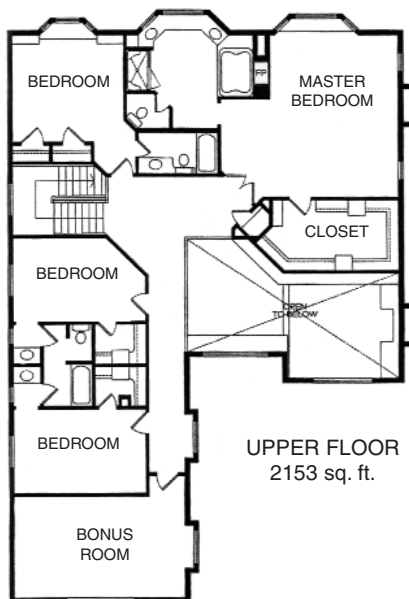


Scenic Acres, \$819,000



Panoramic Mountain Views

The perfect location – in a private & quiet enclave of exceptional Northwest homes on the hill with unobstructed views, from the mountains to the sparkling city lights. Set on a huge pie lot with over \$75,000 spent in landscaping, this 2 storey with walkout basement offers almost 6000 sq. ft. of living space. Features include panoramic views from all 3 levels, high ceilings, extensive hardwood floors and furniture-like built-ins, huge maple kitchen & adjoining family room, 4 upper bedrooms all with ensuite bathrooms, including palatial master suite with huge bay window and ensuite bath with double sized jetted tub and fireplace. Fully developed walkout with 5th bedroom, media room and games room.



Sold **ON THE SHEEP RIVER**
80 ACRES, \$1,390,000



Sold to my buyer in 28 days

- New hilltop estate
- Spectacular views of the mountains, river & valley
- 7600 sq. ft. developed
- 40 minutes west of Calgary

Sold **MOUNT ROYAL, \$1,175,000**
1/3 ACRE VIEW LOT



Sold at full price

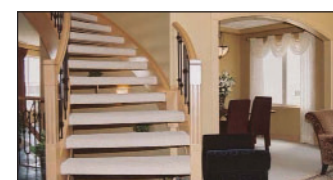
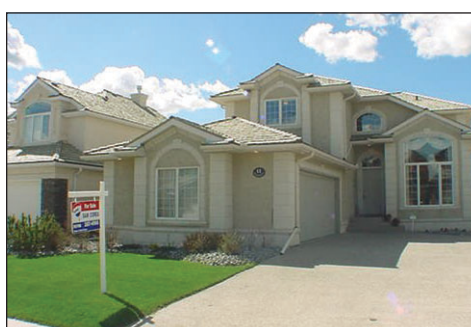
- Two-and-a-half storey home
- Over 3600 sq. ft. developed
- 6 upper bedrooms
- Top floor master suite

COUGAR RIDGE, \$364,900
WALKOUT BASEMENT



- Stunning former showhome with walkout
- Exquisite maple kitchen, granite counters
- Great Room plan, extensive hardwood floors
- Huge bonus room, owner's suite w. city views

SIGNAL RIDGE WEST, \$498,000
FORMER SHOWHOME



- Spectacular, like-new 2600 sq. ft. two storey
- Fully developed walkout basement
- Maple cabinets, granite counter
- Curved staircase, wrought iron spindles

RE/MAX house of real estate Agent

Call Sam Corea at (403) 870-8811 for your home evaluation.