

Sam Corea Exceeding Expectations



(403) 870-8811

Marketing your home for all it's worth

Sold in 2002

3.76 ACRES, \$1,900,000 ON FISH CREEK PARK



13036 Canso Place S.W.

- Unique urban acreage
- On Fish Creek Pk
- Unobstructed 180-degree views
- 4015 sq. ft. bungalow + developed bsmt

HERITAGE POINT, \$1,350,000 TRULY PALATIAL HOME



20 Heritage Lake Blvd.

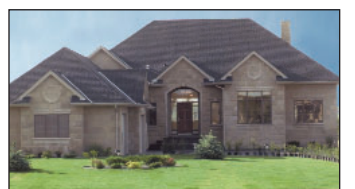
- Over 6000 sq.ft. Including developed walkout bsmt.
- French country style with ballroom
- New with triple garage and huge bonus room

160 ACRES, \$995,000 BUILD YOUR DREAM HOME



- 160 acres of pristine ranchland, \$995,000
- Stunning views of the mountains
- Subdivision potential for four 40-acre parcels

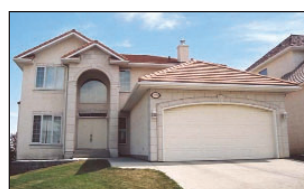
LYNX RIDGE, \$848,000 ON THE GOLF COURSE



123 Lynx Meadows Drive N.W.

- New 2498 sq. ft. walkout bung.
- Unobstructed mountain views
- Fully developed walkout
- With outdoor sports court

PATTERSON, \$549,900 WALKOUT & VIEWS



378 Patterson Blvd. S.W.

- Super location backing onto ravine
- Lot over 10,000 sq. ft.
- Beautiful river valley & city views
- 4 bedrooms & main floor den, walkout bsmt.

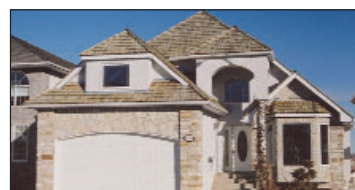
SIGNAL HILL EST. \$519,000 UNOBSTRUCTED VIEWS



2980 Signal Hill Drive S.W.

- Set on ridge superb views
- Walkout bung., 2 + 3 bdms.
- Vaulted ceilings, French doors
- South backyard, triple garage

COACH HILL EST. \$479,000 WALKOUT & CITY VIEWS



5638 Coach Hill Road S.W.

- 2358 sq. ft. plus developed walkout bsmt
- Extensive hardwood & tile floors
- 2 master suites, 5 bdms total

SIGNATURE PARKE, \$399,000 BACKING GREENBELT



115 Signature Terrace S.W.

- Over 2700 sq.ft., plus developed basement
- 5 plus 1 beds, master w/ walk-in
- Pie lot, west backyard, quiet cul-de-sac

ROYAL OAK, \$399,000 FORMER SHOWHOME



26 Royal Crest Way N.W.

- 2600 sq. ft. 3 beds & den
- Media Room developed down
- Fabulous maple/cherry kitchen
- High ceilings, curved stairway

VALLEY RIDGE, \$389,000 ON THE GOLF COURSE



3 Valley Ridge Green N.W.

- Fabulous views onto golf course water feature, full south exposure
- Open plan bung. w/ walkout
- Fully developed, over 3200 sq. ft.

NEW DISCOVERY, \$349,000 READY IN 6 WEEKS



142 Discovery Ridge Way S.W.

- New home, time to choose colors
- 1891 sq. ft. 3 bedrooms and den
- Contemporary, high ceilings
- Granite counters, iron spindles

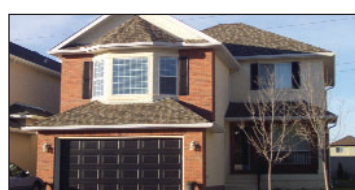
WEST SPRINGS, \$339,900 STYLISH NEW HOME



43 West Cedar Rise S.W.

- Just listed ultra stylish new home
- Quality upgrades, no disappointments
- 2-storey ceilings, maple floors
- Gourmet kitchen, 4 Bdrms & den.

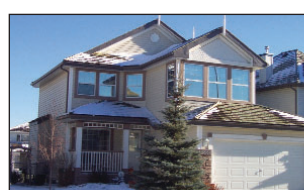
STRATHCONA, \$298,000 BONUS ROOM PLAN



1493 Strathcona Drive S.W.

- 2194 sq. ft. Great Room & Bonus Room
- Hardwood and ceramic floors
- Island kitchen, with maple cabinets

LAKE CHAPARRAL, \$279,900 ONE BLOCK TO THE LAKE



18566 Chaparral Manor S.E.

- Estate location, backing greenbelt
- Quiet street,
- Bright, open 3 bdrm 2 storey
- Extensive hardwood, huge kitchen

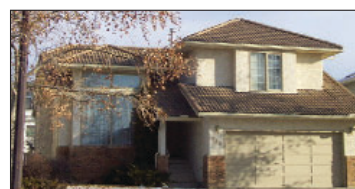
COUGAR RIDGE, \$279,900 AIR CONDITIONING



146 Cougarstone Circle S.W.

- Quiet location, sunny bkyd.
- Like new, totally upgraded 2 storey
- Huge list of extras, features
- Birch hardwood, maple kitchen

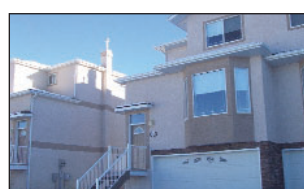
HAWKWOOD, \$259,900 CLOSE TO SCHOOLS



280 Hawkwood Blvd. N.W.

- 3 bdrm, family home
- Vaulted & open plan
- Developed basement
- Available immediately

COUNTRY HILLS, \$219,900 WALKOUT BASEMENT



113 Country Hills Gardens N.W.

- 2164 sq. ft. Executive townhouse w/ walkout
- Maple kitchen w/ black appliances
- 2 full master bedroom suites

STRATHCONA, \$164,900 IDEAL STARTER HOME



570 Strathcona Drive S.W.

- 3 bdrm, 2 storey
- City views, across from park
- Totally updated, just move in
- Developed basement
- No disappointments here

SOLD for over \$1 million

ELBOW PARK, \$1,790,000



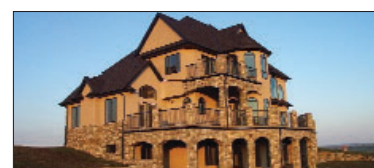
Sold in only 37 days

LYNX RIDGE, \$1,390,000



Listed & sold to my buyer at 97% of list price

TURNER VALLEY, \$1,390,000



Listed & sold to my buyer at 97% in only 28 days

MOUNT ROYAL, \$1,175,000



Sold at full price

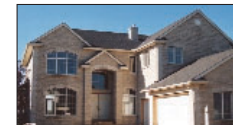
SOLD for \$500,000 - \$1 million

ELBOW VALLEY \$950,000



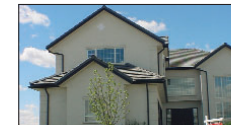
Sold at 97.8% of list price

SPRINGHAVEN \$850,000



Listed and sold to my buyer at full price

SCENIC ACRES \$798,000



Sold to own buyer at 97.1% of list price

ELBOW VALLEY \$759,900



Sold at 98.6% of list price in one week

ELBOW VALLEY \$759,900



Sold at full price

SIGNAL RIDGE \$559,900



Listed & sold to my buyer at 97% of list price

THE SLOPES \$549,900



Sold at 96.1% of list price

THE SLOPES \$549,900



Sold at 97.2% of list price

RICHMOND HILL \$549,900



Sold at 99.6% of list price

PATTERSON \$525,000



Sold at 95.2% of list price

DISCOVERY RIDGE \$515,400



Sold at full price

INNER CITY \$507,500



Sold to my buyer

SOLD for \$200,000 - \$500,000

SIGNAL RIDGE \$498,000



Sold at 97.3% of list price

PATTERSON \$425,000



Sold at 96.8% of list price

PATTERSON \$389,900



Sold at 98.7% of list price

PATTERSON \$389,900



Sold at 95.5% of list price

SIGNATURE PARKE \$368,000



Sold at 99.3% of list price in two weeks

SIENNA HILLS \$359,900



Sold at 98.6% in one week

SIENNA PARK \$359,900



Sold at 97% of list price

SPRINGHAVEN \$354,900



Sold at 98.6% of list price

COUGAR RIDGE \$349,900



Sold at 98.5% of list price

SPRINGHAVEN \$349,900



Sold at 98.5% of list price

SPRINGHAVEN \$339,900



Sold at 99.1% of list price

THE HAMPTONS \$339,900



Sold at 98.7% of list price in 21 days

SIGNATURE PARKE \$335,000



Sold at 98.5% in 2 weeks

SIENNA HILLS \$319,900



Sold at 98.4% of list price

SPRINGHAVEN \$319,900



Sold at full price in less than a week

CHRISTIE ESTATES \$319,900



Sold at 98.4% of list price

ERLTON \$319,900



Sold at 97% of list price

SPRINGHAVEN \$284,900



Listed and sold to my own buyer at 98%

SPRINGHAVEN \$259,900



Sold at 98.4% of list price on Christmas Eve

SPRINGHAVEN \$264,900



Sold at 98% of list price

SPRINGBANK HILL \$259,900



Sold at 98.4% of list price

COACH HILL \$234,900



Sold at 99% of list price

PATTERSON \$219,900



Sold at 97.7% of list price in one week

SIGNATURE PARKE \$219,900



Listed and sold to my buyer at 98%