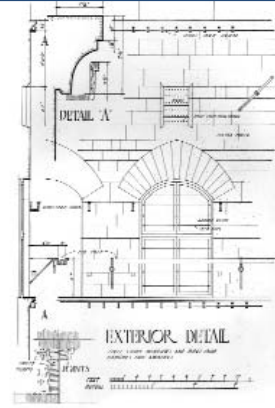


Ultimate Exposure

Marketing your home for all it's worth!

**Call Sam Corea
at 870-8811**

E-mail: sam@4homesincalgary.com



Ultra luxurious, stunning view – \$1,500,000

Bearspaw

Brand new home, 4200 sq. ft. bungalow, plus 3600 sq. ft. developed in walkout basement! Backs onto golf course, minutes to Crowfoot shopping centre and U of C. Open plan with huge, full height fieldstone fireplace, 5 bedrooms and playroom with it's own enclosed courtyard, fully developed walkout with media room and nanny suite with it's own kitchen, F/P & bedroom with luxurious ensuite bathroom.



Work and play at home



\$599,000

Elbow Valley

The best price in this award winning community! Just steps to parks, playgrounds and lakes, this beautiful, custom-built, two storey features a main-floor master bedroom and 2nd storey with extra bedrooms, plus a large bonus room with it's own private entryway that would make an ideal home office. Fully developed basement with indoor hot tub and pool and attached garage with heated floors.

What a view!



\$675,000

Springbank

What a view! This beautiful custom-built two storey is set high on the hill with spectacular 180-degree views of the mountains and overlooking Springbank. This fabulous home features extensive maple cabinets, granite countertops, top-quality appliances, hardwood floors, high ceilings and ample windows to enjoy the views from all three levels of the house, including the fully developed walkout basement!

Huge pie lot



\$329,900

Sienna Park

Just listed, A+ location, quiet cul-de-sac, walking distance to elementary school and skating rink, huge pie lot, almost π acre with west backyard, stone pathways and underground sprinklers, sun-filled two storey with walkout basement, barely a year old! "Great room" plan with hardwood floors and oak kitchen with island eating bar, master bedroom with incredible mountain views! Will not last, call quick!

Four-car garage



\$525,000

Prominence

Stunning executive home, on the ridge, with breathtaking views overlooking the twinkling city lights! This stately two storey with fully developed walkout basement offers over 4300 sq. ft. of living space with a renovated kitchen, a huge master suite/sitting room and walkout basement with a media room and hot tub. Rare four-car garage and one of the most prestigious addresses in the city!

Sparkling city lights



\$319,900

Erlton

Below replacement cost! Super spacious high-end condo in very desirable new building next to Lindsay Park, the Elbow River and bike paths. Features almost 1700 sq. ft. of living space with two large decks and terrific city views. All upgraded with cozy in-floor heat, granite counters, maple cabinets, fireplace, high ceilings, ensuite laundry and storage, two ensuite baths and fully enclosed double garage.

Panoramic views



\$549,000

Springbank

Country quiet, city close, just minutes from shopping and a quick commute to downtown, this spectacular home in The Slopes (an exclusive, gated community) is sure to impress. This 2700 sq. ft. two storey with walkout basement features panoramic mountain views from all three levels, a huge country kitchen, maple floors, granite countertops, iron railings and a triple attached garage.

Exclusive listing



\$549,900

The Summit

In the very Summit of Richmond Hill with absolutely breathtaking, unobstructed mountain views from both levels of this incredible bungalow with fully developed walkout basement. Over 3500 sq. ft. developed, sunny south exposure, open plan with tons of natural light, whisper-quiet location close to parks and just minutes to shopping, downtown and golf courses.



• Find out what homes in your neighbourhood are selling for.

• Free, quick, over-the-phone home evaluation.

• Timing – when is the best time to sell?