



Wentworth

\$719,000

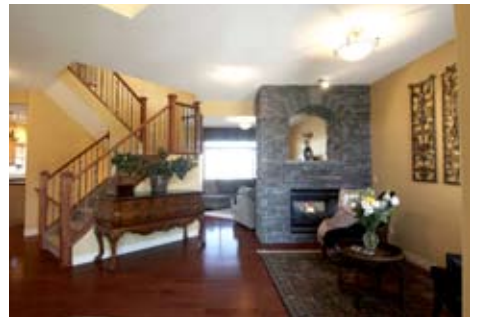
-80 Wentworth Crescent, SW-

Beautifully upgraded 2380 s.f. home located on a low-traffic crescent in the sought-after community of "Wentworth" is within walking distance to a large neighborhood park, and a new Co-op shopping plaza. Open & airy floor plan offers a main floor flex area complete with 2-sided gas fireplace: ideal as a dining room or formal sitting area. The 2-sided

gas fireplace with stone facing features an arched pass-thru to the great room which is sure to be the social center of this home. An island-style kitchen features granite counters, stainless steel appliances and a true walk-thru pantry. Ascend the stairs and enjoy a vaulted bonus room with a large arched window enjoying the morning sun. Escape into

a spacious master bedroom complete with a large window overlooking the manicured rear yard and luxuriate in a 5 piece ensuite complete with a corner jet-tub and 2 piece granite vanity. The full basement is bright with 4 extra-large, egress windows. This home is sure to impress.

45



Presented by
Sam Corea, Remax House of Real Estate, 870-8811 | www.samsluxuryhomes.com



samcorea

Marketing your home for all it's worth.

870-8811

www.samsluxuryhomes.com

