

samcorea

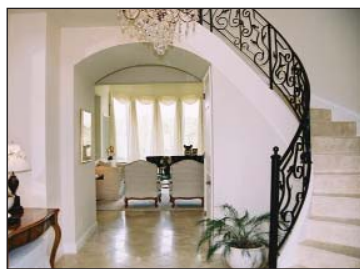
www.samsluxuryhomes.com

**SPECTACULAR NEW BUNGALOW  
STONE PINE, \$2,750,000**

A "rare find", this architecturally designed, oversized, rambling hillside bungalow will leave you breathless! Over 6000 sq. ft. of luxurious development and with panoramic city-to-Rocky Mountains views from both main & walkout level. Finishing details include high, "tray" & dramatic beamed ceilings, gleaming walnut paneling & built-ins, rich walnut kitchen cabinetry, burnished marble countertops & vanity tops, distinctive mosaic, limestone & travertine marble floors, 2 interior fireplace & 2 outside, a gourmet kitchen, king-sized master suite in it's own wing with ensuite spa, fully dev'd walkout offering exercise room opening to private patio & hot tub, 2 more BR each w/ it's own retreat & ensuite + steam room.

**43 Granite Ridge****JOHN HADDON DESIGN, 8 ACRES  
MILLARVILLE, \$975,000**

The views from this hilltop are stunning! Set on 8.33 acres, with panoramic Rocky Mountain & surrounding countryside views, away from the hustle & bustle of everyday life, but just a stone's throw away from Millarville Farmers' Market. It's a professionally designed hillside bungalow (designed by Haddon, built by Granville in 1998) sure to appeal to both lovers of quality & drama as well practicality. Offering over 3300 sq. ft. on the main floor (+ the art studio/observatory above the master bedroom) w/ an additional 3358 sq. ft. in the walkout basement. The main floor offers 180° views, extensive walnut flooring, fireplaces, huge island kitchen, 4 BR & den, media room, oversized triple garage.

**5 minutes to Millarville Farmers' Market****ELEGANT SOUTHERN ARCHITECTURE  
BEARSPAW, \$1,275,000**

This incredible 4543 sq. ft. 2 storey home is set on 3.4 landscaped acres in prestigious "Church Ranches" just a few minutes to Crowfoot Centre shops & services. This magnificent residence offers a dramatic & elegant southern charm that is unique to this area. Finishing details include 10' to 15' high ceilings, marble & ceramic floors, antiqued & ivory cabinetry, granite kitchen countertops, furniture-quality built-ins, superb light fixtures, grand foyer w/ sweeping limestone staircase & custom iron railing, huge central great room, formal dining room, library, den, family room w/ 2 sets of French doors to large deck, main floor master suite, 3 upper bedrooms incl. one in it's own wing (ideal teen or nanny suite). Fully dev'd walkout with media room & wine room. Central air cond. Triple garage.

**7 Cheyenne Meadows Way****SPRINGBANK 3.88 ACRES  
SPRING HAVEN ESTATES, \$739,000**

A tranquil location, as pretty a piece of land as you can imagine, neatly fenced & beautifully landscaped, with panoramic mountain views, just a few minutes west of Calgary on Springbank Road. Built in 1998, finishings include hand-plastered ceiling details, cornice mouldings, extensive & rich woodwork, wainscoting & fireplace mantles, French doors, sash windows, 3 fireplaces, and hardwood floors. It's a centre-hall plan with formal Living Room, family-sized formal dining room and separate Family Room. The off-white kitchen is the heart of this home & is oversized, warm & welcoming, opening out to a huge south rear deck. There are 4 upper bedrooms, and the master suite opens to it's own huge deck. The third floor features a gable-vaulted bonus room, 5th Bedroom & bathroom.

**243152 Range Road 31A**