



The living room fireplace has a ceramic tile face and floor-level hearth.

FROM I12

CHOICE: Fireplace the focal point

The kitchen is shown with black appliances, maple cabinets with a tuscan stain, ceramic tile backsplashes, laminate countertops and a telephone desk.

It also has an island that holds double sinks, a dishwasher and a raised eating bar and a raised eating bar for two. The adjacent nook has a door leading to the rear deck.

The focal point of the living room is the fireplace, with a ceramic tile face and hearth and a paint-grade

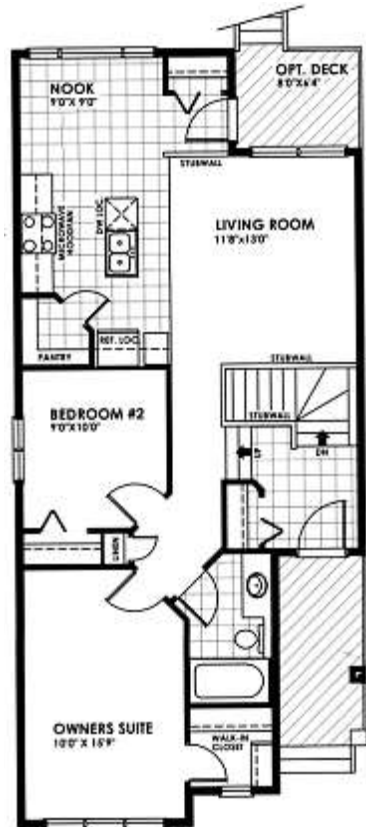
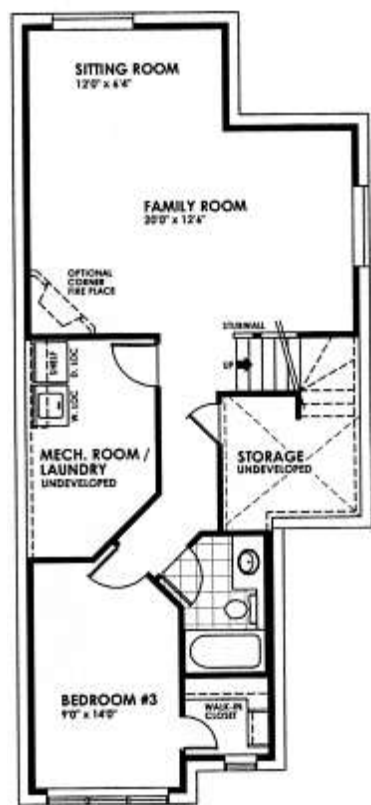
MDF (medium density fibreboard) surround. Behind a door at the lower level landing, the laundry area shares space in the mechanical room and is next to a linen cupboard and additional storage space.

In this version of the Escape, there is a family room at the front of the home, with four above-grade windows for plenty of light.

There is also a corner fireplace with tile face and hearth and MDF surround. At the rear of the home are two more bedrooms and a full



An abundance of windows grace the front of the home, giving it great street appeal and letting the sun in.



The flexible floor plan gives buyers options. Left, the standard plan for the main floor. Right, an optional lower-level development.



Above, the kitchen has black appliances maple cabinets with a Tuscan stain, ceramic tile backsplashes, laminate countertops, a telephone desk and a raised eating bar for two. The island separates the cooking area from the living space. At left, the view of the kitchen and dining area from the eating nook, which has a door leading to the rear deck.

samcorea

Marketing your home for all it's worth.™

Got a thing for your builder? We encourage that.



Welcome to an innovative residential community.

Select your tranquil location and bring your own builder. Unique, generously sized country estate lots. Rocky Mountain views, just 20 minutes to downtown with nearby world-class recreational adventures in Kananaskis, Canmore and Banff. In Springbank, adjacent to the Elbow Valley community, MacKenas Country Estates offers 21 exclusive lots, each just under an acre. Property perimeters incorporate natural contours and each will be immaculately landscaped with mature trees. Lots from \$559,000.

For self-touring information or a guided visit, call Sam Corea.



MACKENAS
COUNTRY ESTATES