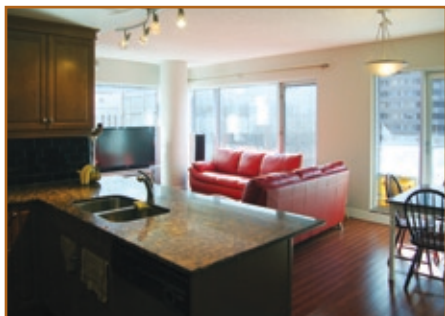




Altadore \$1,450,000
1909 – 48th Avenue SW

The true definition of inner-city luxury in this exceptional home built by Mission Homes. 1759 + 658 s.f. with rich hardwood floors, detailed cream millwork, built-in sound system & so much more. Master boasts coffered ceiling, walk-in closet & incredible steam-shower ensuite with wine fridge. Basement has heated floors and is developed to include media room (with built-ins), wet bar & 3rd bedroom with ensuite. Wood burning fireplace on patio.



Downtown \$439,000
#1007, 920 – 5th Avenue SW

1013 s.f. 2 bedroom, 2 bath condo in the sought after "5 West" building downtown! Bow River & downtown views, open plan with beautiful kitchen featuring granite & stainless appliances. Walk to work or the C-train, parks & restaurants just steps away!



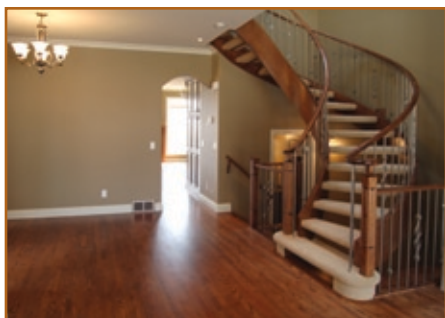
Richmond Hill \$499,000
107 Sierra Nevada Close SW

Backing a linear park with walking paths! This 1664 + 449 s.f., 3 + 1 bedroom home boasts a fully developed basement, 9' ceilings, a bright den with bayed window, spacious great room with fireplace & fabulous open kitchen. A perfect family home!



Lakeview \$549,000
6428 Law Drive SW

2100+ s.f. of developed living space, sitting atop a huge pie-lot in Lakeview! 3 beds, hardwood, crown moulding & island-style kitchen. Vast recreation area & 2 dens in basement. Double detached garage & parking pad. Walk to the Glenmore reservoir!



Altadore \$850,000
4218 – 18th Street SW

Another gem by Saddle River Custom Homes! 1898 + 741 s.f., "The Chelsea" features beautifully developed basement, hardwood, legacy kitchen with stainless appliances & granite. 3-sided f/p in master & luxurious 6 piece master ensuite with jetted shower!



samcorea

403-870-8811