

samcorea

www.samsluxuryhomes.com

**OASIS WITHIN THE CITY, \$925,000
PARK-LIKE 1-ACRE LOT**

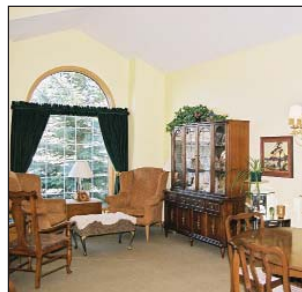
Just listed. Exquisite country home in desirable Anatapi Estates, one of the most beautiful areas in Springbank, just 5 minutes from Westhills and close to downtown. This 3426 sq.ft. 2 storey offers an oversized triple garage and a fully developed walkout basement, set in a quiet & secluded treed acreage. All rooms are on a grand scale with a total of 5 bedrooms, all with ensuite bathrooms & walk-in closets. Features gracefully curving open staircase, huge windows, white millwork & cabinetry, Great Room with 2 storey height ceiling, expansive kitchen with centre island and butler's pantry, beautiful sunroom, octagonal dining room and main floor den. Wheelchair friendly.

36 Anatapi Lane S.W.

**EDGEMONT, \$695,000
ON THE RAVINE, CITY & MTN VIEWS**

Just listed. Spacious 2 storey home on a superb view lot in Edenstone! Features both city & mountain views and a beautifully landscaped West backyard. Over 2700 sq. ft. plus fully developed walkout basement, 3 + 1 bedrooms and main floor den, large foyer with grand, open string staircase, vaulted living room with 2 way fireplace shared with the family room, large formal dining room with French doors, oak kitchen with adjoining eating nook offering panoramic views. Master suite has a semi-circular sitting room to enjoy the views and an oversized ensuite bath with jetted tub. Walkout development includes rec room, billiards room, den, bedroom & full bathroom.

76 Edenstone Way N.W.

**RICHMOND HILL, \$299,900
BEST LOCATION - ON GREENBELT**

Just listed. This bright & open planned 2 storey is ideally located backing on to a greenbelt with pathways and tot lot, walking distance to Westhills Mall and a quick commute to downtown. Features vaulted living and dining rooms, main floor den, main floor family room. Oak kitchen, 3 upper bedrooms including master suite with jetted tub ensuite bathroom, developed walkout basement with large games room/billiards room with gas fireplace. Beautiful backyard with stone patio. This home also offers central air conditioning!

8 Sierra Vista Circle S.W.

**STRATHCONA PARK, \$229,900
RENOVATED CHARACTER HOME**

Just listed. Beautifully updated and well maintained 3 bedroom 2 storey with all the charm and character of a heritage home. Recent renovations include new kitchen with tumbled stone backsplash, new flooring, fresh paint, raised panel doors, high end "Silhouette" blinds throughout, and a \$30,000 basement renovation to include a 6' jetted tub, dual headed shower and heated tile floors. Set on a quiet street with mature landscaping the backyard is private oasis in the city. Close to the park, Westside Recreation Centre & a quick commute to downtown.

23 Strandell Crescent S.W.

samcorea

Phone: (403) 686-7800

What is your home worth? Call for a market evaluation